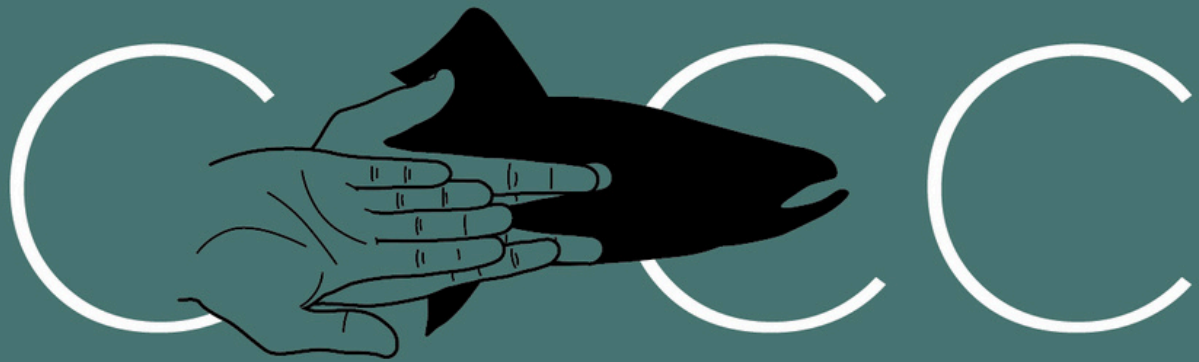


CANADIAN ECOLOGICAL CONNECTIVITY CONFERENCE

APRIL 22-25, 2025



Banff Park Lodge, Banff, Alberta



CANADIAN ECOLOGICAL CONNECTIVITY CONFERENCE



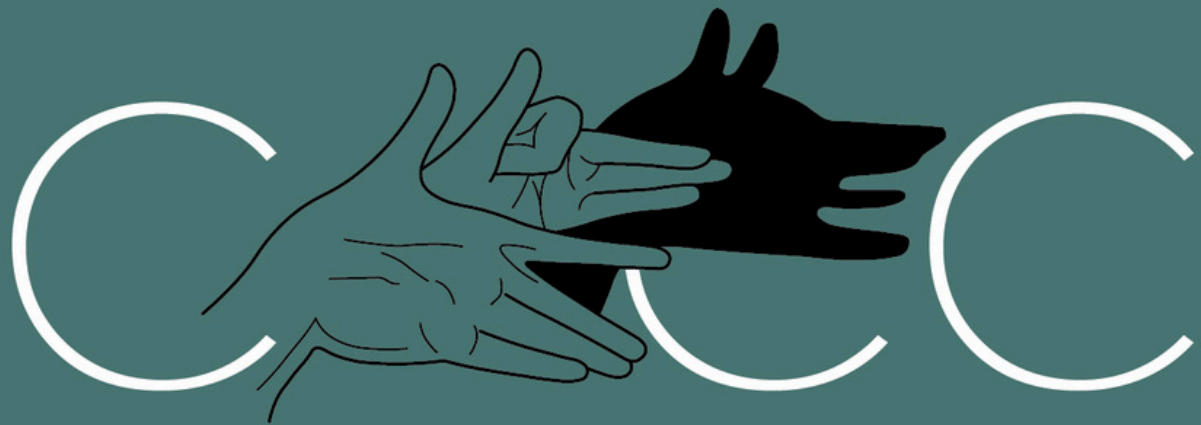
CANADIAN ECOLOGICAL CONNECTIVITY CONFERENCE



CANADIAN ECOLOGICAL CONNECTIVITY CONFERENCE



CANADIAN ECOLOGICAL CONNECTIVITY CONFERENCE



CANADIAN ECOLOGICAL CONNECTIVITY CONFERENCE

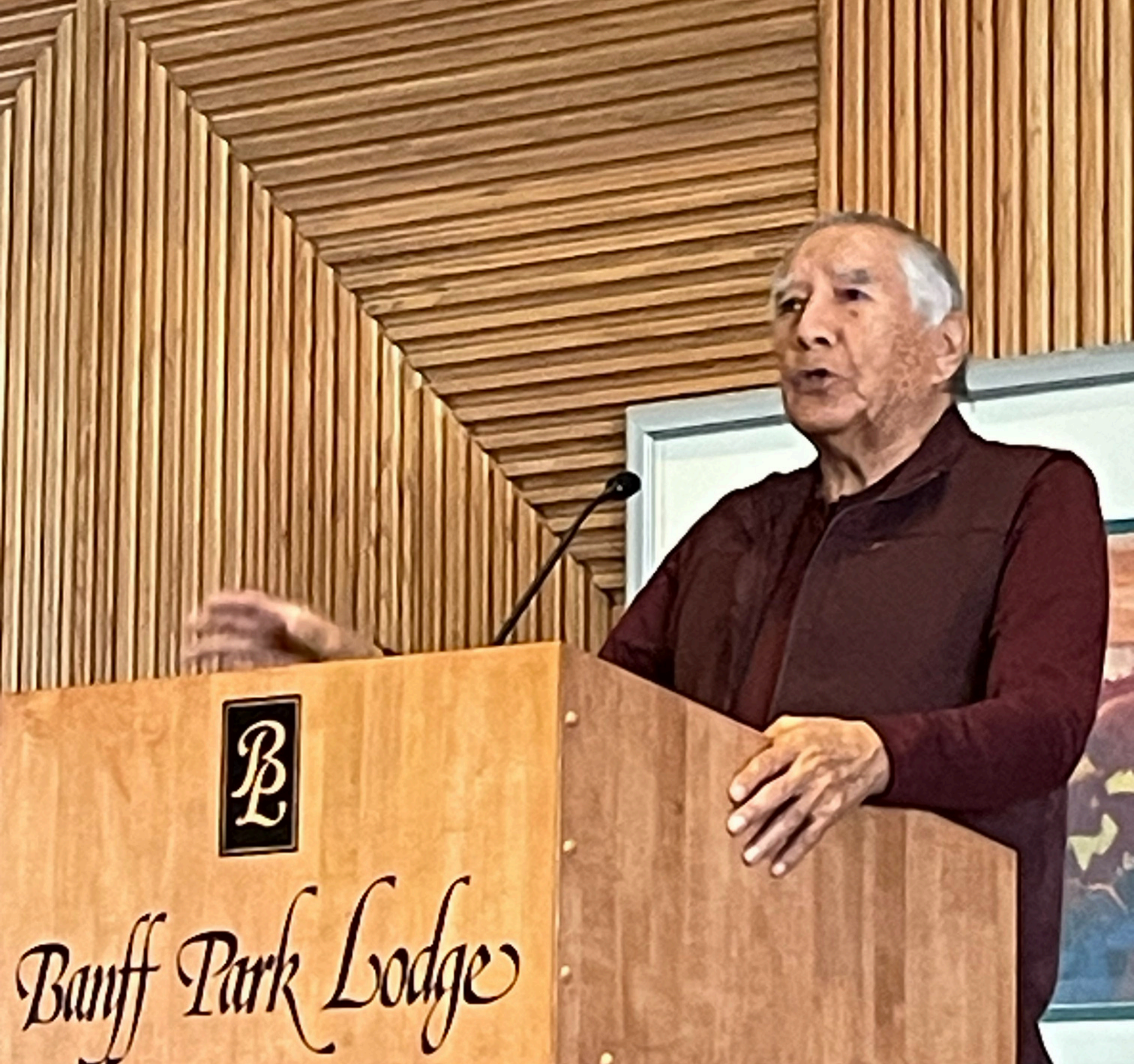


CANADIAN ECOLOGICAL CONNECTIVITY CONFERENCE

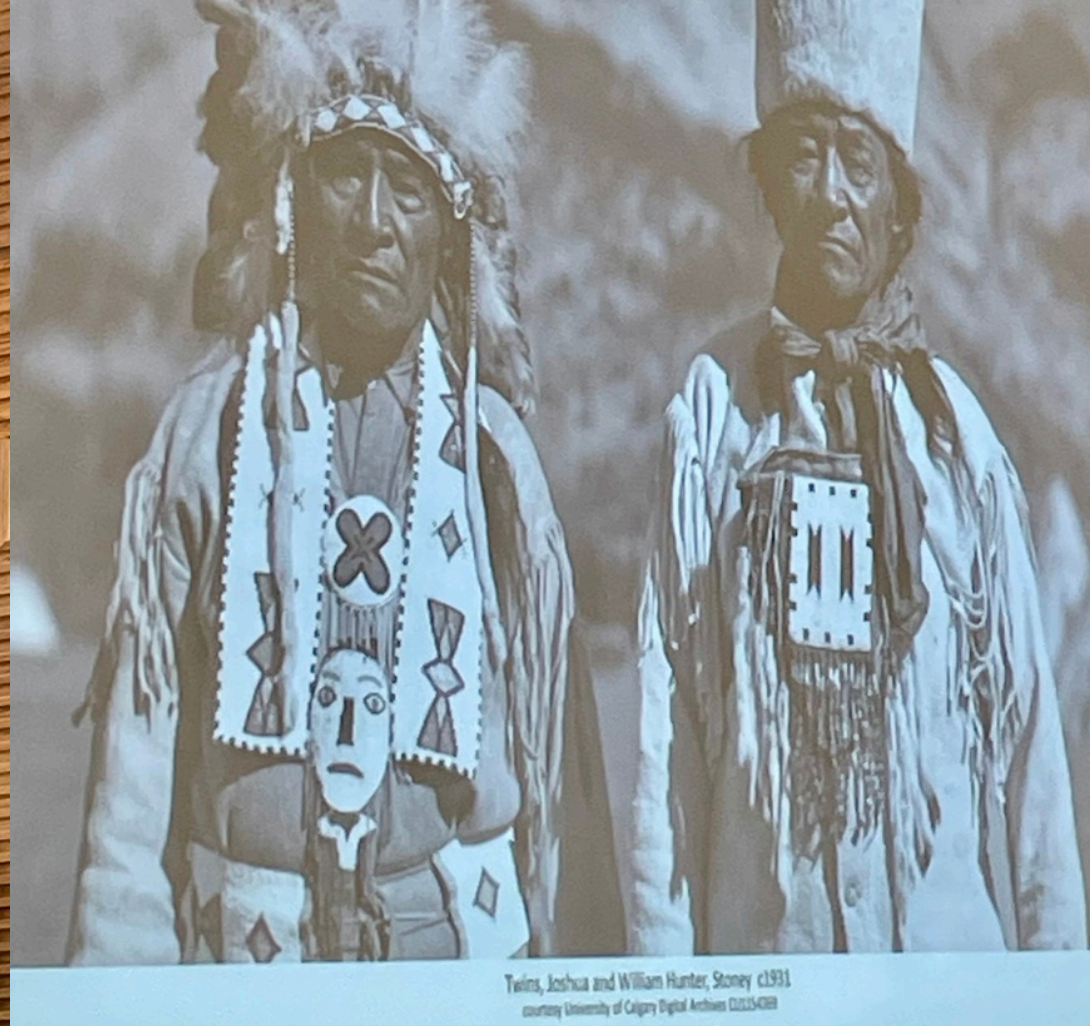
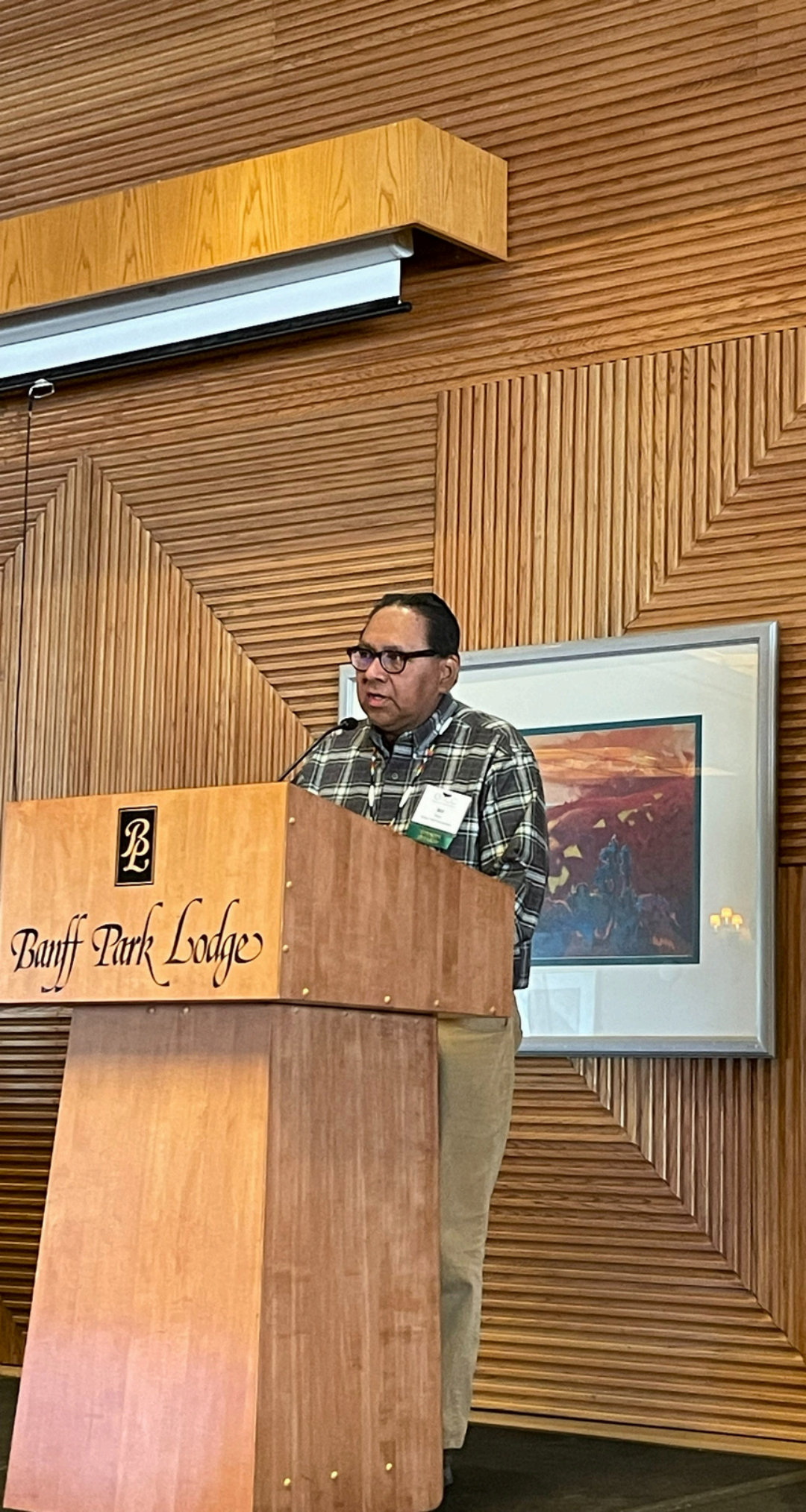


CANADIAN ECOLOGICAL CONNECTIVITY CONFERENCE

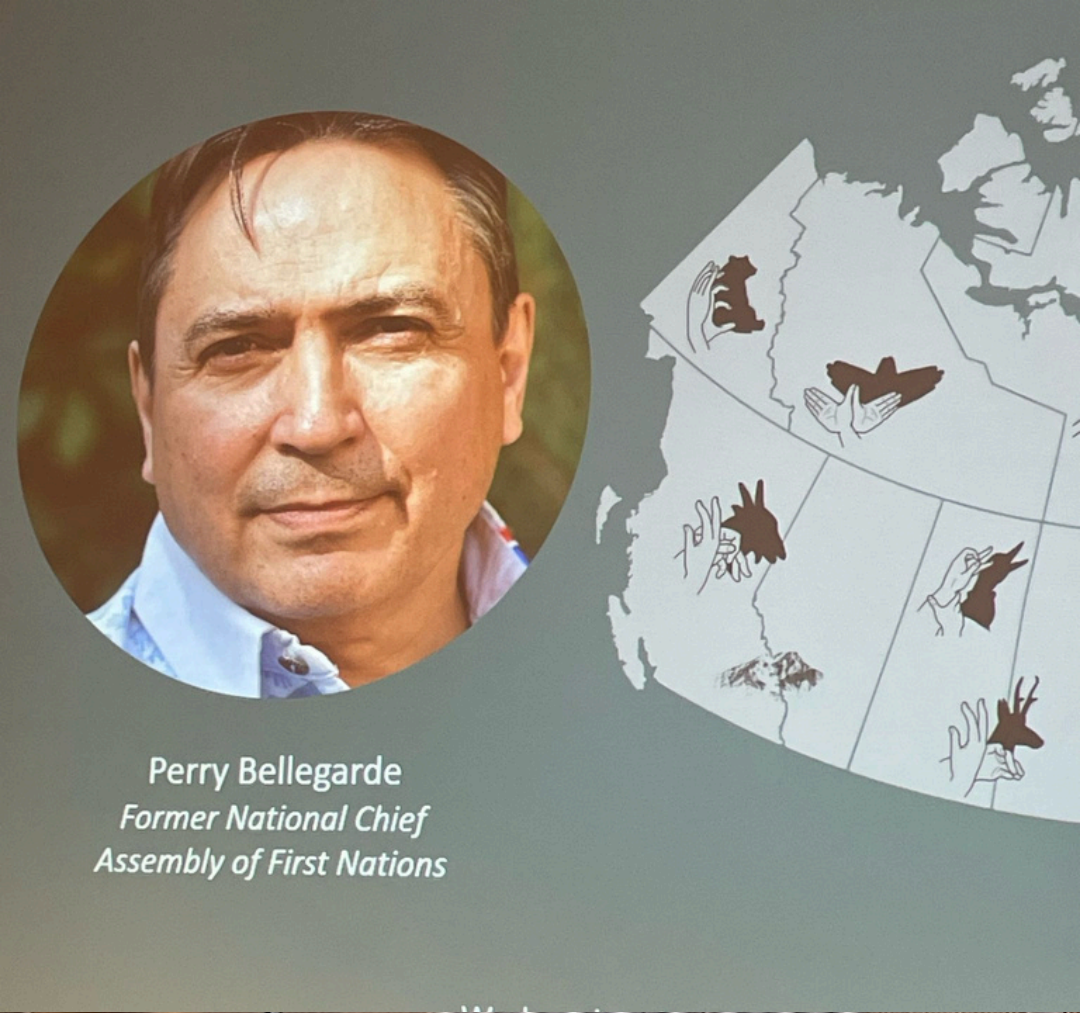
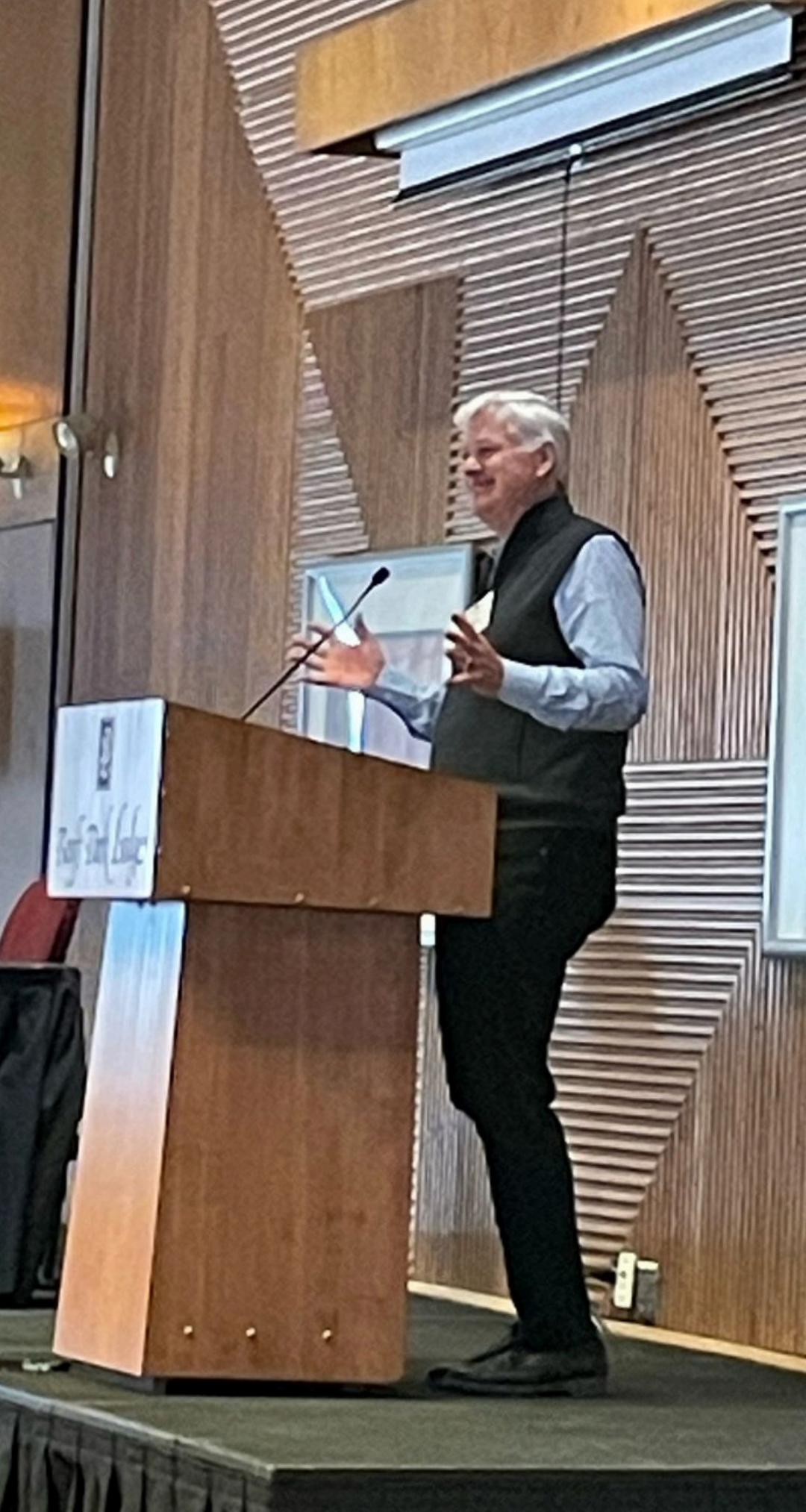
OPENING DAY HIGHLIGHTS —————>



DR. LEROY LITTLE BEAR: "TO ACHIEVE
CONNECTED AND PROTECTED LANDS...WE
MUST MOVE FROM OUR FOCUS ON
TRANSACTION TO TRANSFORMATION."



STONY NAKODA GUIDES SHARED THEIR LAND KNOWLEDGE AND CULTURAL WISDOM WITH SETTLER-TRAVELLERS THROUGH THE SPIRITUALLY AND CULTURALLY IMPORTANT LANDS OF BANFF NATIONAL PARK.



Perry Bellegarde
*Former National Chief
Assembly of First Nations*

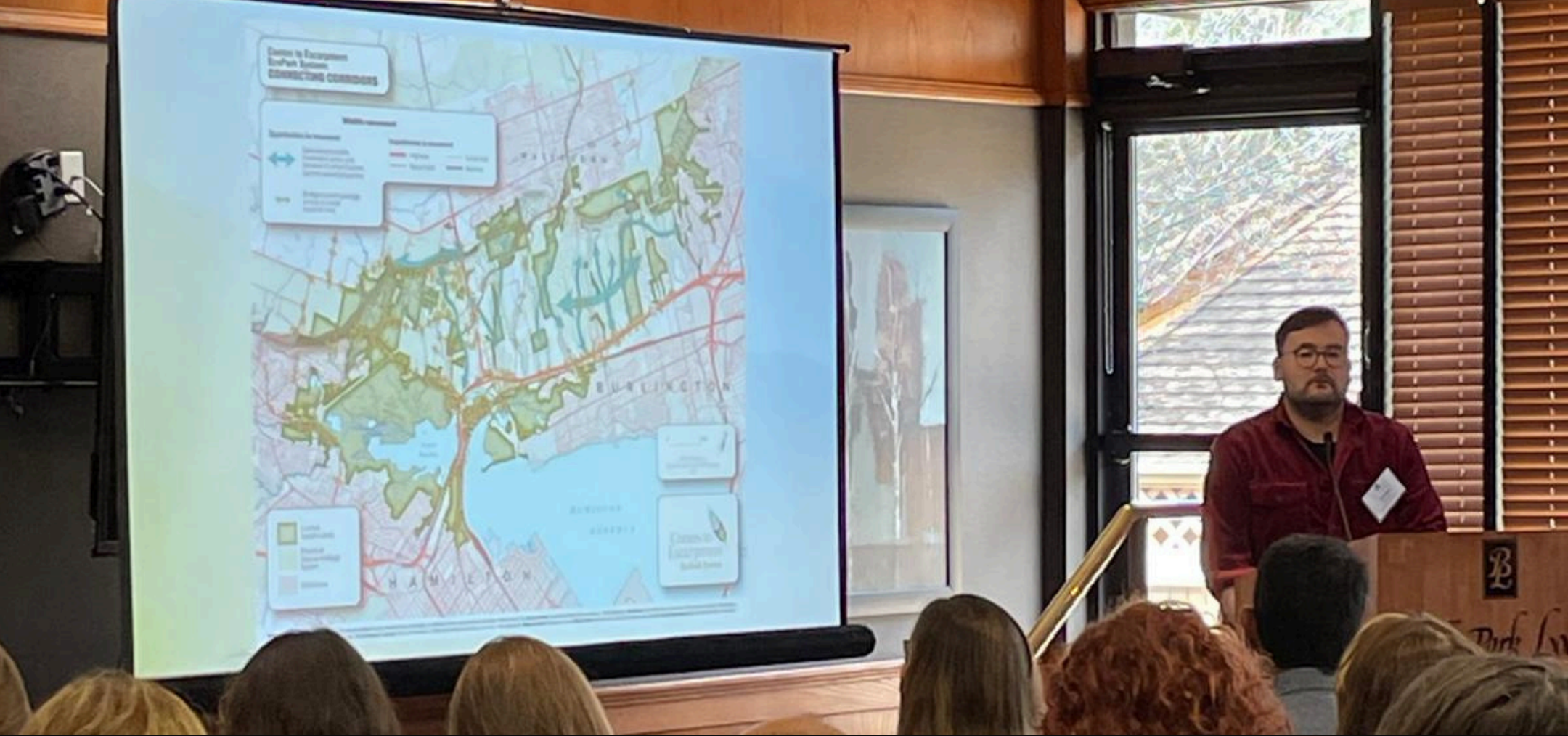
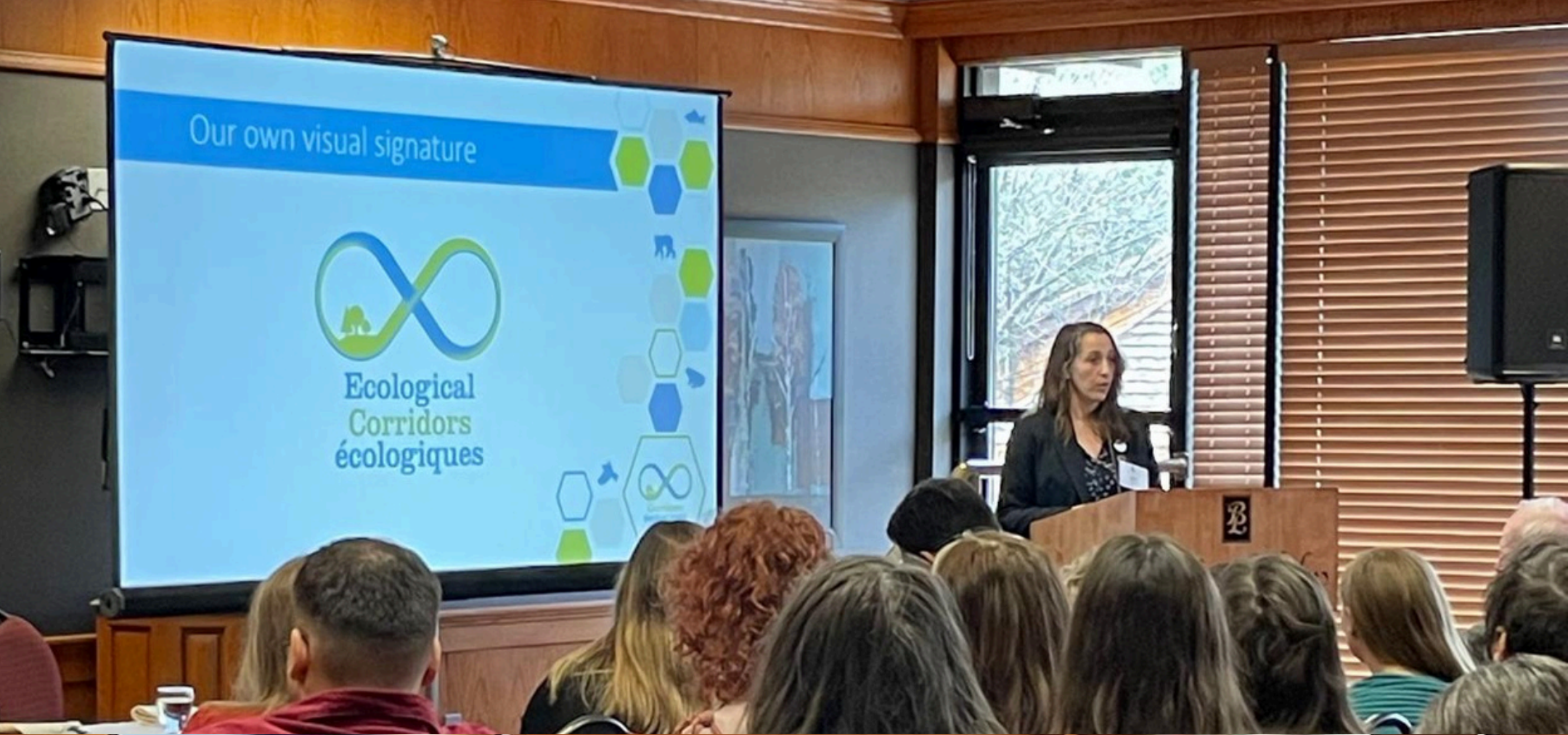


HARVEY LOCKE INTRODUCED KEYNOTE
PERRY BELLEGARDE, FORMER NATIONAL
CHIEF OF THE ASSEMBLY OF FIRST NATIONS.



RENEE CALLAHAN, EXECUTIVE DIRECTOR OF ARC SOLUTIONS, OPENED THE CONFERENCE.

TRACY LEE (MIISTAKIS INSTITUTE) PRESENTED, EMPHASIZING THE NEED TO ADVANCE ECOLOGICAL CORRIDOR PLANNING ACROSS REGIONS.



SPEAKERS FROM QUEBEC SHARED
COLLABORATIVE APPROACHES TO
ECOSYSTEM GOVERNANCE.

THE COOTES TO ESCARPMENT PROJECT
HIGHLIGHTED THE POTENTIAL FOR URBAN
CONNECTIVITY IN SOUTHERN ONTARIO.

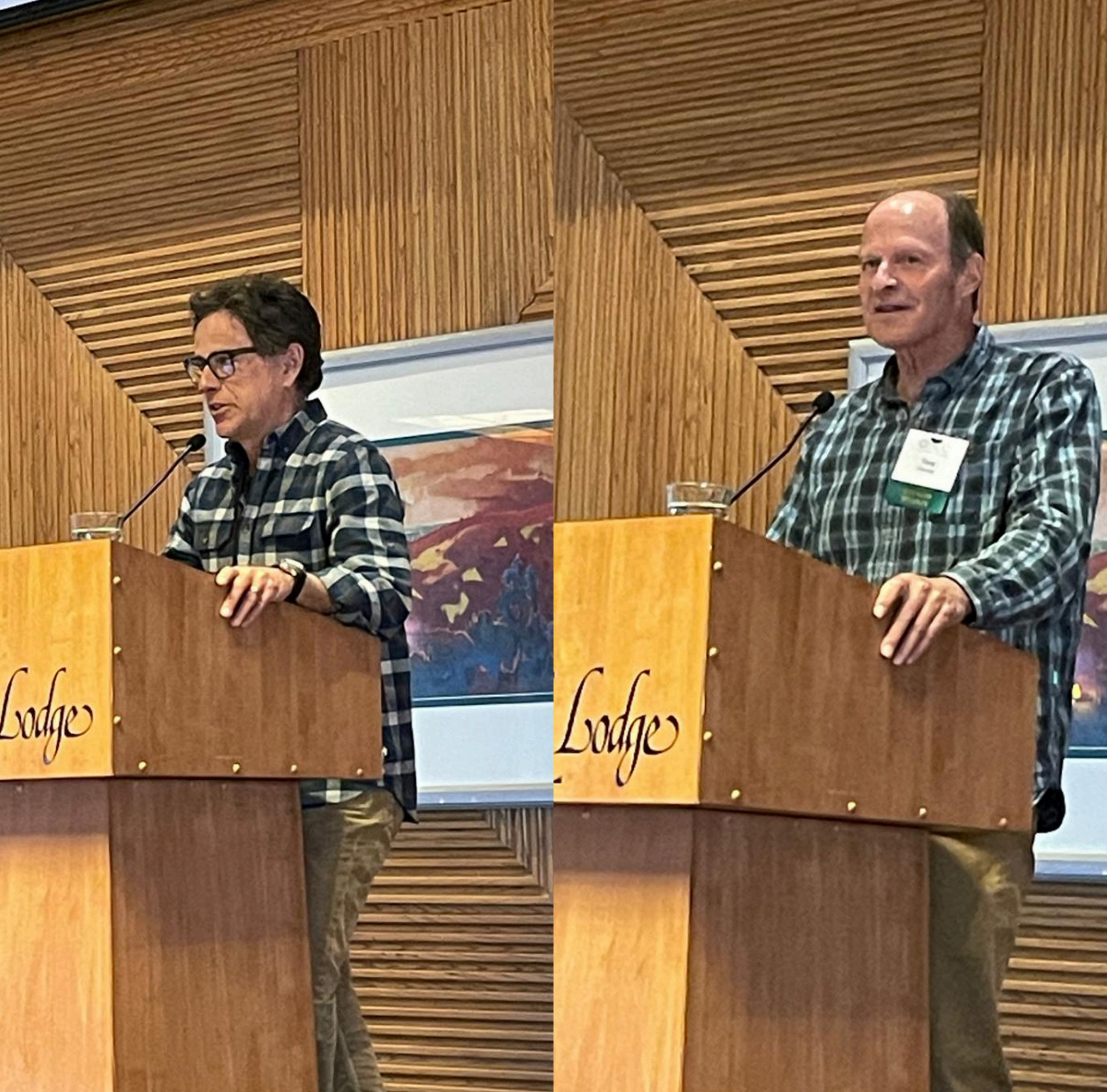
CANADIAN ECOLOGICAL CONNECTIVITY CONFERENCE



DAY 3 HIGHLIGHTS —→



EDL DIRECTOR PROF. NINA-MARIE LISTER PRESENTED *CONNECTIVITY 2.0* ON DESIGNING FOR BIODIVERSITY, CONNECTIVITY, AND CLIMATE RESILIENCE, FEATURING OUR *SAFE PASSAGE PROJECT* AND THE *WILD WAYS STUDIO*.



LUNCHTIME KEYNOTE BY DR. TONY CLEVINGER, WHOSE RESEARCH LAID THE GROUNDWORK FOR THE BANFF WILDLIFE CROSSINGS - INTRODUCED BY JEREMY GUTH, FOUNDER OF ARC SOLUTIONS AND EDL RESEARCH PARTNER.



FIELD TRIP! 100 CONFERENCE ATTENDEES EXPERIENCED CONNECTIVITY IN THE BOW VALLEY - FROM ECOLOGICAL CORRIDORS (ANCIENT CORRIDORS, USED FOR MILLENNIA BY FIRST NATIONS, SETTLERS, AND WILDLIFE) TO OVERPASSES AND UNDERPASSES.

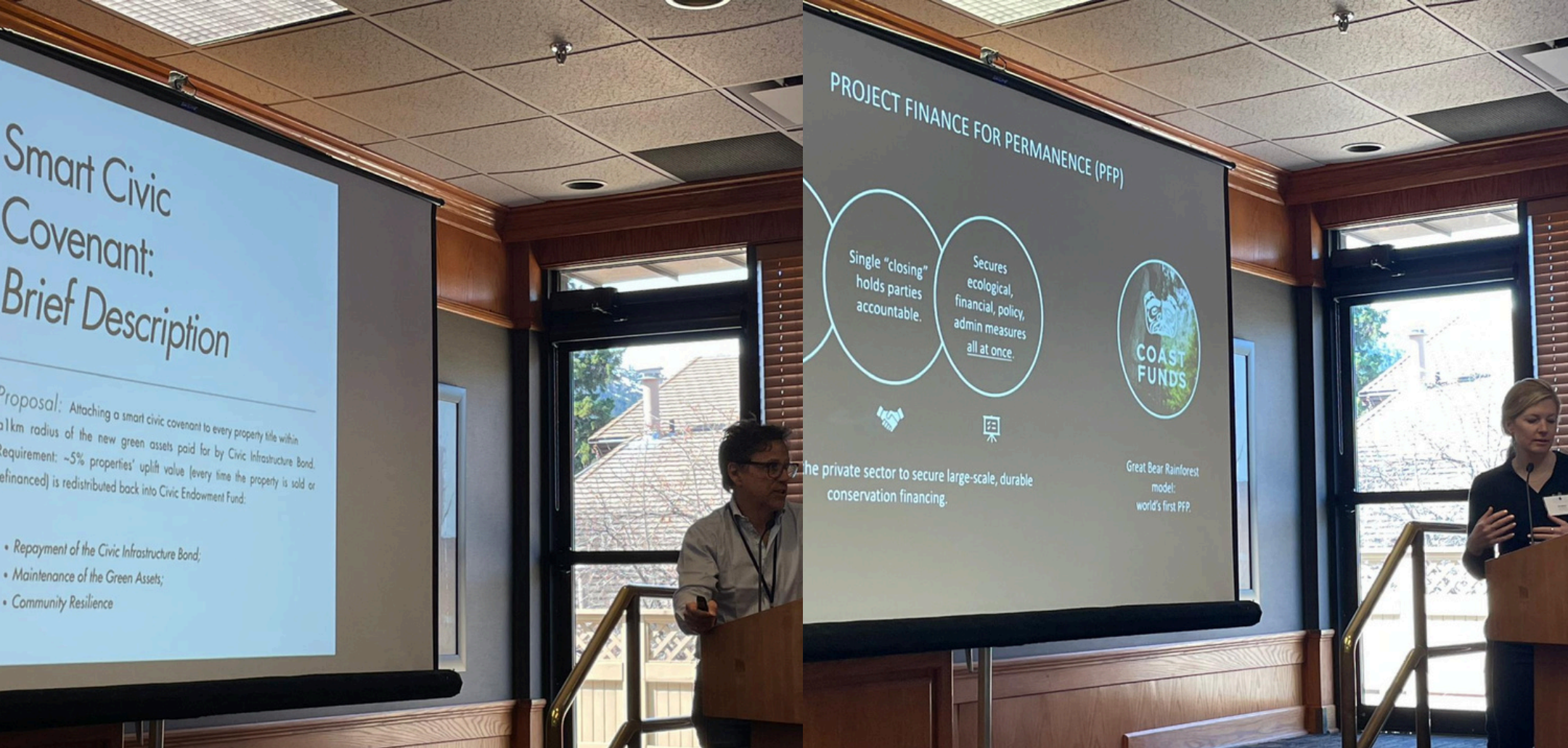


CANADIAN ECOLOGICAL CONNECTIVITY CONFERENCE

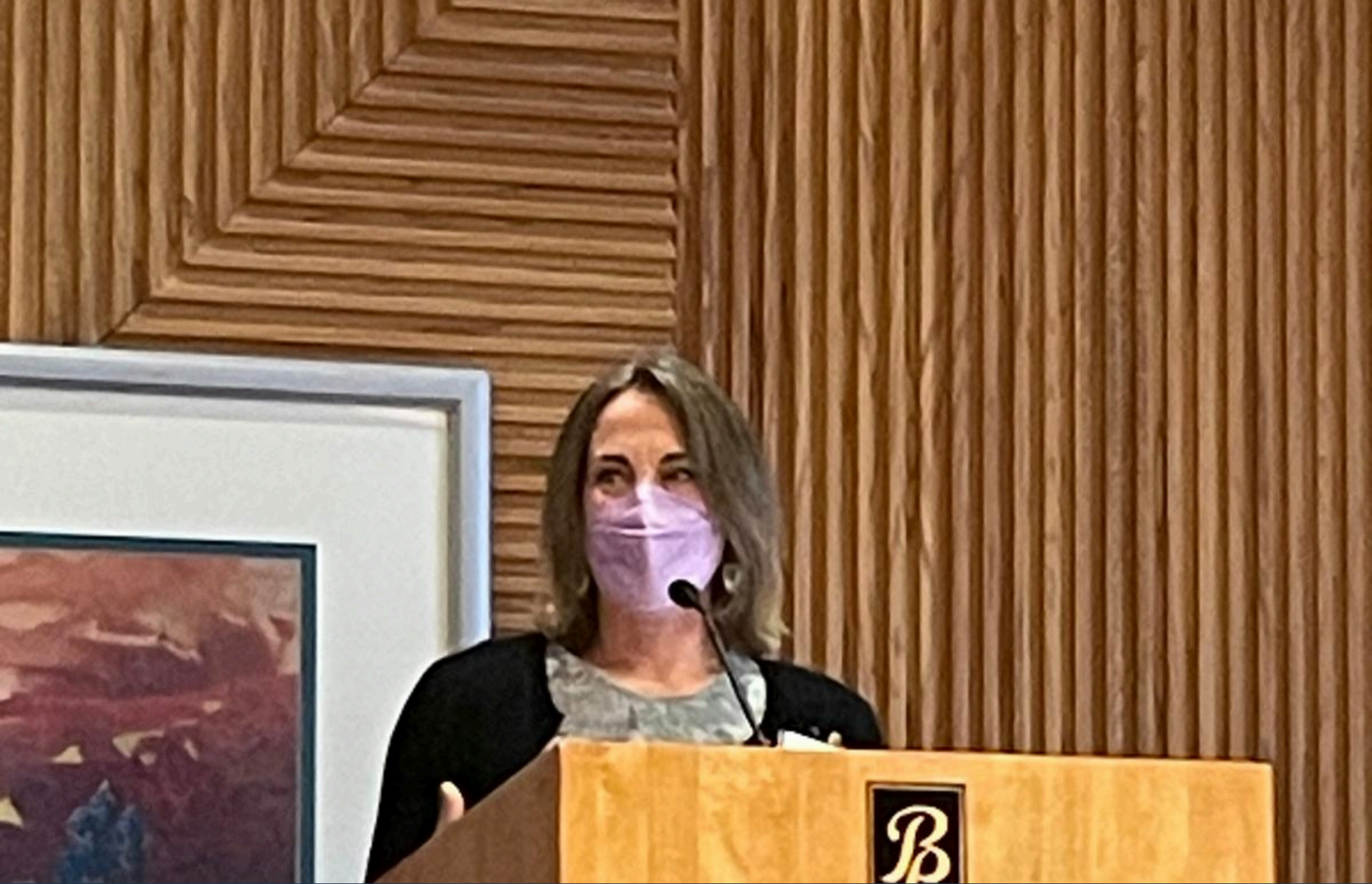
DAY 4 CLOSING HIGHLIGHTS —————>



WILDLIFE WERE ON THE MOVE IN BANFF:
WAPITI (ELK) GRAZED SAFELY ALONG
SECONDARY ROADS, PROTECTED BY
EXCLUSIONARY FENCING FROM THE TRANS-
CANADA HIGHWAY, WHILE A SALAMANDER
CROSSING PROVIDES SAFE PASSAGE FOR
SMALLER SPECIES.



SMART FINANCE FOR NATURE PANEL: WITH JEREMY GUTH (ARC SOLUTIONS), MEGHAN SAUNDERS (COAST FUNDS), SAM WHITEYE (CAROLINIAN CANADA), AND CHRISTINE DRAKE (PARKS CANADA'S NATIONAL ECOLOGICAL CORRIDORS PROGRAM).



DR. AERIN JACOB (NATURE CONSERVANCY OF CANADA) CLOSED THE CONFERENCE:

"BE THE WATER, THE FLOW THAT SHAPES THE EARTH, AND SUSTAINS LIFE... REMEMBER THE STAR THAT NEVER FADES, THE NORTH STAR THAT GUIDES US HOME ACROSS TIME AND CULTURES ON TURTLE ISLAND — INDIGENOUS AND SETTLERS ALIKE."

LET THIS CALL BE OUR NORTH STAR— FOLLOW IT, FOR A THRIVING FUTURE, FOR GOOD RELATIONS, AND TO MAKE HOPE ALONG THE WAY.